

The innovative Alu-Sandwich Construction

EMPL Vehicles are made of **AIR-tec®** panels. AIR-tec is a combination of PP-honeycomb with aluminium top layers.

Body

The top layer is natural aluminium with protection film and the core is made of PP Honeycomb.

Result

A sandwich composite with high-class optic & low weight but high stiffness.

Properties

- highest bending stiffness but light weight
- excellent compression strength
- high-grade top surface quality
- form and measurement stability
- fire class B1 according to DIN 4102
- easy to process and handle



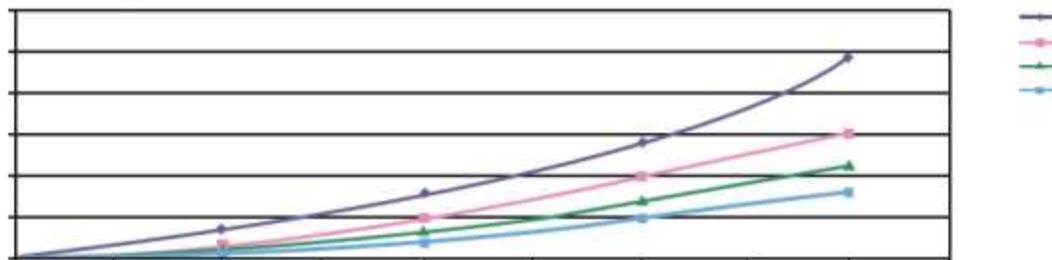
General Physical Properties

The operation temperature is between -30 und +85° C. The material is a member of the fire class B1 according to DIN 4102.

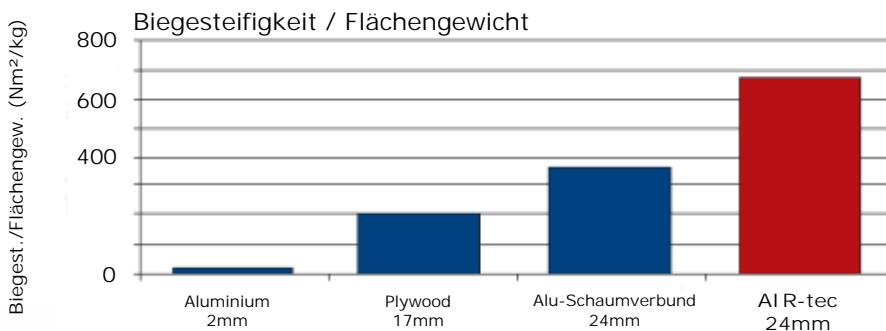
Mechanical and Physical Data

- Thickness: 24 mm
- Weight per unit area: 6,5 kg/m²
- Thermal insulation (U-Value): 2,59 W/m²K
- Modulus of elasticity: 3800 N/mm²
- Bending strength: 14 N/mm²
- Bending stiffness: 4378 Nm²/m

Diagramm of Load Capacity



Comparison with other Manufacturers' Products



This diagram shows the excellent stiffness of the 24 mm panel in **AIR-tec®** consideration of the weight per unit area and in comparison to other materials.

EMPL - "high-end" fire fighting technology!



ALU-Tech

Examples



EMPL - "high-end" fire fighting technology!

